

DJCRANES



| Industry · Machinery |

河南德钧实业有限公司
Henan Dejun Industrial Co., Ltd



WEBSITE



YOUTUBE



Henan Dejun Industrial Co., Ltd

E-mail: inquiry@dejunindustry.com

Office Tel: +86-371-6010-1171

Cell Phone: +86 159 9374 5231

Website: www.dejuncranes.com

Address: Room 1604 No.4 Building, 9th Street East Cross South Second Road
North, Free Trade Zone, Zhengzhou city, Henan Province, China

www.dejuncranes.com

Henan Dejun Industrial Co.,Ltd

Henan Dejun Industrial Co., Ltd, is a comprehensive industrial company integrating design, production, sales, installs and services a complete line of overhead material handling equipment. Dejun has an area of 680,000m2, more than 2,700 employees, of which the number of managerial and technical personnel is 400, and senior engineer is more than 80, more than 3,000sets of production and test equipment, fixed assets RMB930,000,000.



Henan Dejun Industrial Co., Ltd mainly produces all kinds of overhead crane, gantry crane, electric hoist, electric winch, lifting platform and crane accessories. Dejun has a precision machining team familiar with the industry standard, machining and inspection equipment made in Japan and Europe and America, can provide technical advice and professional and sound whole-process service for customers and is committed to creating unique value for customers with sophisticated equipment and technology.

Henan Dejun Industrial Co., Ltd has the independent import-export qualification, passed ISO9001 international quality system certification, and gains the international certificates of CE, SGS, and BV, etc, The crane machinery are popular with all customers and have exported to more than 120 countries, including the United Kingdom, Sweden, Russia, the United States, Canada, New Zealand, Zambia, Ethiopia, Egypt, UAE, Tajikistan, Thailand, Korea, the Philippines, Indonesia, Bangladesh, Mexico, Brazil, Peru, Pakistan, Morocco, Chile, Uruguay, Australia, Serbia, Maldives, Malaysia, Jordan, Honduras, etc.



Automatic Welding Robot



Intelligent Manufacturing Workshop



CNC Gantry Milling Machine



Processing Workshop



Large Floor Boring Machine



Electric hoist test-bed

Certificate



Product Series:

Overhead crane(Bridge Crane/EOT crane): single girder overhead crane, double girder overhead crane,

Gantry crane: single girder gantry crane, double girder gantry crane, semi-gantry cranes,

Jib crane: wall travelling jib crane, pillar jib crane , mounted jib crane

Electric hoist: manual/ electric chain hoist, single/ double speed electric hoist, explosion proof Electric Hoist, etc.

Port crane & container crane: quayside container crane, rail mounted ,container gantry crane, single jib portal crane, rubber type container gantry crane.

Winch: electric winch, friction mine winch, hand control free rolling winch, wire rope electric winch.

Work Platform: self-propelled hydraulic scissor lift, fixed hydraulic scissor lift, movable hydraulic scissor lift, aluminum alloy single mast hydraulic lift, aluminum alloy double mast hydraulic lift.

Crane Parts: crane grab, crane drum, crane drum, end carriage, crane control, crane wheel, crane hook, crane lifting trolley. etc.



European Standard Double Girder Overhead Crane

European Standard Double Girder Overhead Crane have features of design concepts, small dimension, light dead weight, Compared with traditional cranes, the limiting distance is minimum from hook to wall, and headroom is the lowest, which makes cranes work more close to the front, and lifting height more higher that increases effective working space of workplace.

New workshops can be designed more smaller and have more functions because the dead weight is light, and the wheel pressure is small. Smaller size workplace means saving a huge amount of money from initial construction investment, long-term heating, air conditioning and other maintenance free.

Design standard: FEM, DIN

Lifting capacity: 1.6t-300t

Span: ≥ 6 m

Working class: A5, A6

Ambient temperature: -20-60°C

Advantage: The best design with

best configuration, such as:

Schneider, ABM, SEW, French Steel

Rope and so on. It is very popular

with competitive offering.



Double Girder Overhead Crane Parameter (16 tons)

Span	S(m)	10.5	13.5	16.5	19.5	22.5	25.5	28.5	31.5
Working duty		A5	A5	A5	A5	A5	A5	A5	A5
Lifting height	m	6, 9, 12	6, 9, 12	6, 9, 12	6, 9, 12	6, 9, 12	6, 9, 12	6, 9, 12	6, 9, 12
Lifting speed	m/min	0.66/4	0.66/4	0.66/4	0.66/4	0.66/4	0.66/4	0.66/4	0.66/4
Trolley speed	m/min	2.0~20 3.0~30	2.0~20 3.0~30	2.0~20 3.0~30	2.0~20 3.0~30	2.0~20 3.0~30	2.0~20 3.0~30	2.0~20 3.0~30	2.0~20 3.0~30
Crane speed	m/min	3.0~30 4.0~40	3.0~30 4.0~40	3.0~30 4.0~40	3.0~30 4.0~40	3.0~30 4.0~40	3.0~30 4.0~40	3.0~30 4.0~40	3.0~30 4.0~40
Total weight	kg	8506	10500	12754	14827	17235	20579	23554	27371
Max Wheel Load	KN	112	120	127	133.4	140.2	74.6	78.5	83.4
Track		P38	P38	P38	P38	P38	P38	P38	P38
Rail top to main top	H	1416	1516	1618	1518	1568	1568	1568	1618
Rail top to girder bottom	H1	82.5	82.5	82.5	183	235	384	434	534
Rail top to hook centre	H2	224	324	426	326	376	376	376	426
Hook left limitation	C1	1250	1250	1250	1250	1250	1250	1250	1250
Hook right limitation	C2	1250	1250	1250	1250	1250	1250	1250	1250
Trolley gauge	L	1800	1800	1800	1800	1800	2200	2200	2200
Wheel base	W	3850	3850	3950	4000	4000	4458	4598	4598
Crane width	B	4584	4584	4684	4734	4734	5132	5272	5272
Track center to end beam	A	140	140	140	140	140	188	188	188

European Style Single Girder Overhead Crane

European style single girder overhead cranes have the design concepts of small dimension, light dead weight and so on. Compared with traditional crane, European style single girder overhead crane has the minimum limiting distance from hook to wall, lower headroom and higher lifting height.

With these features, the European style single girder overhead crane could provide the workplace with more effective working space. As a result of it, the workplace could be designed smaller than before but with more functions. In addition, the wheel pressure is also decrease because the dead weight than before. A huge amount of money could be saved from the initial construction investment, long term heating fee, air conditioning and other maintenance fee. From the above, European style single girder overhead crane is a advisable choice for the client.

Design standard: FEM, DIN

Lifting capacity: 1t-20t

Span: $\geq 6m$

Working class: A5, A6

Ambient temperature: -20-60 °C

Advantage: The best design with best configuration, such as: Schneider, ABM, SEW, French Steel Rope and so on.

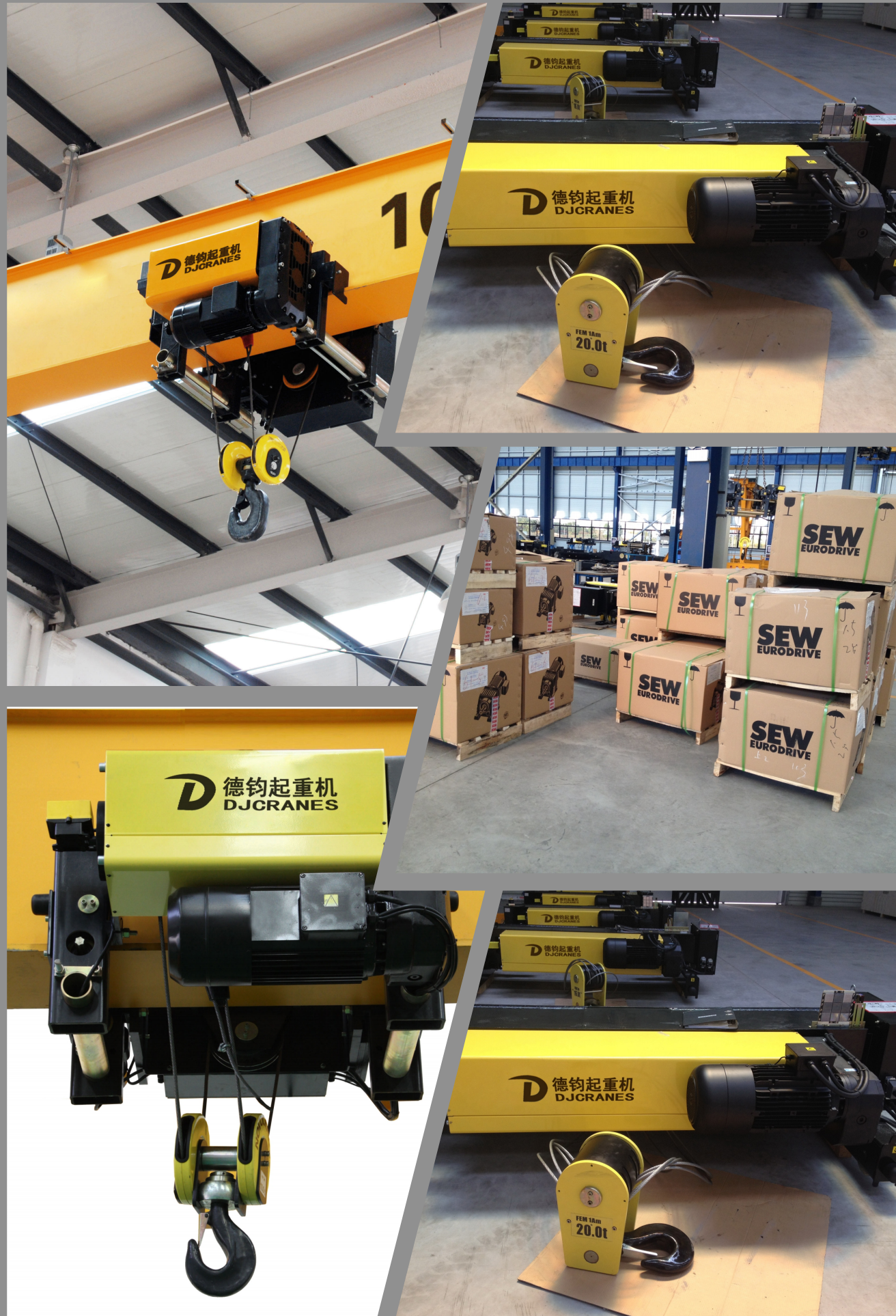
It is very popular with competitive offering



Single Girder Overhead Crane Parameter (10 tons)

Span	S(m)	7.5	10.5	13.5	16.5	19.5	22.5	25.5
Working duty		A5	A5	A5	A5	A5	A5	A5
Lifting height	m	6、9、12	6、9、12	6、9、12	6、9、12	6、9、12	6、9、12	6、9、12
Lifting speed	m/min	0.8/5	0.8/5	0.8/5	0.8/5	0.8/5	0.8/5	0.8/5
Trolley weight	kg	640	640	640	640	640	640	640
Total weight	kg	2696	3200	4091	5307	6466	7694	9309
Max Wheel Load	KN	51.85	54.44	57.7	60.83	64	67.26	71.36
Track		P30	P30	P30	P30	P30	P30	P30
Rail top to main top	H	908	908	1008	1208	1308	1358	1482
Rail top to hook centre	h	465	465	465	365	365	365	345
Hook left limitation	C1	675	675	675	675	675	675	695
Hook right limitation	C2	1020	1020	1020	1020	1020	1020	1020
Track center to end beam lateral	A	100	100	100	100	100	100	100
Wheel base	W	2000	2000	2000	2500	3000	3000	3500
Crane width	B	2674	2674	2674	3174	3674	3674	4174





European Wire Rope Electric Hoist

European wire rope electric hoist offer outstanding quality and efficiency. Absolutely reliability is one of the most important features. We introduced latest technology like infinitely variable speed control, braking energy feedback system, safety monitor into control system. All those innovations benefit our customers for greater reliability and efficiency and make our wire rope hoist very competitive in the market.

Machinery design is based on FEM calculations for standard lifting gear allowing safe and reliable lifting of loads from 3.2 to 80 tons. Machinery has smooth and silent operation that extends the lifetime of the hoist.

Design standard: FEM, DIN

Lifting capacity: 3.2~80t

Lifting height: 6~50m

Working class: M5, M6

Ambient temperature: -20~60°C

Application: It can be mounted on single beam, bridge, gantry and jib cranes, widely used in factories, mines, harbours, warehouses, cargo storage areas and shops.



European Standard Electric Hoist Parameter (10 tons)

Working duty	M6	M6	M6	M6
Lifting height	m	6	9	12
Lifting speed	m/min	0.66/4	0.66/4	0.66/4
Pulley ratio		4/1	4/1	4/1
Traveling speed	m/min	2 ~ 20	2 ~ 20	2 ~ 20
Max Wheel Load	KN	34.7	34.8	34.9
Total weight	kg	650	690	730
width of main beam	b	300 ~ 450	300 ~ 450	300 ~ 450
Lifting side width	K1	560	560	560
Operation side width	K2	550	550	550
Hoist length	l	1140	1320	1500
Hook superior limit	h	700	700	700

Double Girder Overhead Crane

Double girder overhead crane is a kind of lifting equipment which is used in workshop, warehouse and yard to lift the materials. The end beam of bridge crane run along the laid on both sides of the elevated rail, the crane can make full use of the space below the bridge to lift materials, and it doesn't have obstacles from the ground equipment. So it is one of the most widely used, the largest number of hoisting machinery.

We can supply double girder overhead crane with lifting capacity: 5~500t, span:7.5~31.5m, lifting height: 3~50m, work class: A5, A6, A7, speed: single / double speed. We also design and manufacture the nonstandard crane according users' demanding.

Lifting capacity: 5-500 t

Span: 7.5-31.5m

Working class: A5-A7

Ambient temperature: -20~80°C

Application: The product is applicable to the transfer, assembly, check and repair as well as load and unload at mechanic processing workshop, subsidiary workshop of metallurgical mills, warehouse, goods yard and power station.



Double Girder Overhead Crane Parameter (10 tons)

Span	S (m)	10.5	13.5	16.5	19.5	22.5	25.5	28.5	31.5
Lifting height	m	16	16	16	16	16	16	16	16
Lifting speed	m/min	8.5	8.5	8.5	8.5	8.5	8.5	8.5	8.5
Trolley speed	m/min	43.8	43.8	43.8	43.8	43.8	43.8	43.8	43.8
Crane speed	m/min	90.7	90.7	90.7	91.9	91.9	84.7	84.7	84.7
Lifting motor	kw	17	17	17	17	17	17	17	17
Trolley motor	kw	2.5	2.5	2.5	2.5	2.5	2.5	2.5	2.5
Total weight	kg	13640	15520	18350	20340	22750	27140	30530	33620
Max Wheel Load	KN	101	108	117	122	130	140	150	160
Track		P43	P43	P43	P43	P43	P43	P43	P43
Rail top to main top	H1	1876	1876	1876	1876	1876	1926	1926	1926
Rail top to hook centre	H2	602	602	602	602	602	552	552	552
Wheel base	W	4050	4050	4050	4050	4050	5000	5000	5000
Crane width	B	5704	5704	5704	5882	5882	5948	5948	5948
Hook left limitation	S1	1050	1050	1050	1050	1050	1050	1050	1050
Hook right limitation	S2	1300	1300	1300	1300	1300	1300	1300	1300
Trolley gauge	K	2000	2000	2000	2000	2000	2000	2000	2000





Single Girder Overhead Crane

Single girder overhead crane usually used in plant, warehouse, stock ground, different places to lift goods, such as accessories manufacturing warehouse, tube convey plant, maintenance warehouse etc. It is prohibited to use the equipment in the combustible, explosive or corrosives environment.

We can supply single girder overhead crane with lifting capacity: 0.5~20t, span:7.5~28.5m, lifting height: 3~30m, work class: A3,A4, speed: single / double speed. We also design and manufacture the nonstandard crane according users' demanding.

Lifting capacity: 0.5-20 t

Span: 7.5-28.5m

Working class: A3-A4

Ambient temperature: -20~60°C

Application: This product is widely used in plants, warehouses, material stocks to lift goods. It is prohibited to use the equipment in the combustible, explosive or corrosive environment.



Single Girder Overhead Crane Parameters (10 tons)

Span	S(m)	7.5	10.5	13.5	16.5	19.5	22.5	25.5	28.5
Lifting height	m	9	9	9	9	9	9	9	9
Lifting speed	m/min	7	7	7	7	7	7	7	7
Trolley speed	m/min	20	20	20	20	20	20	20	20
Crane speed	m/min	20	20	20	20	20	20	20	20
Lifting motor	kw	13	13	13	13	13	13	13	13
Trolley motor	kw	0.8	0.8	0.8	0.8	0.8	0.8	0.8	0.8
Total weight	t	3.26	3.76	4.4	5.17	5.92	7.48	9.71	14.05
Max Wheel Load	KN	51.3	55.3	58.4	61.3	63.9	68.2	74.2	85.4
Track		P24	P24	P24	P24	P24	P24	P24	P24
Rail top to main top	H1	720	720	820	875	875	925	1100	1200
Rail top to hook centre	H2	1850	1850	1850	1900	1940	2000	1920	1920
Wheel base	W	2000	2000	2000	2500	2500	3000	3500	4000
Crane width	B	2500	2500	2500	3000	3000	3500	4000	4700
Hook left limitation	S1	1293	1293	1293	1293	1293	1293	1293	1293
Hook right limitation	S2	1893	1893	1893	1893	1893	1893	1893	1893
Main girder height	H3	900	900	1000	1100	1140	1250	1350	1450

Double Girder Gantry Crane

- Design and manufacture according to GB/T 14406 "General gantry crane".
- Mainly made up of bridge, trolley, crane traveling mechanism and electric system.
- All the procedure is finished in the operating room.
- Applies to the open warehouse or rail along for general handling and lifting work.
- Also can be equipped with other lifting devices like grab or container spreader or etc. for special work.
- Prohibited for high temperature, flammable, explosive, corrosion, overloading, dust or other dangerous operations.

Type: MG

Lifting capacity: 5t~500 t

Span: 18-35m

Working class: A5, A6, A7

Ambient temperature: -20~60°C

Application: This product is a regular crane widely used at open ground and warehouses to load, unload and grab materials. It has 2 controlling methods, namely ground controlling and room controlling.



Double Girder Gantry Crane Parameter (10 tons)

Span	S (m)	18	22	26	30	35
Lifting height	m	10	10	12	12	12
Lifting speed	m/min	8.5	8.5	8.5	8.5	8.5
Trolley speed	m/min	43.8	43.8	43.8	43.8	43.8
Crane speed	m/min	37.7	37.7	40.1	40.1	40.1
Lifting motor	kw	17	17	17	17	17
Trolley motor	kw	2.5	2.5	2.5	2.5	2.5
Total weight	kg	52600	60700	70800	78800	89000
Max Wheel Load	KN	225	228	245	290	310
Track		P43	P43	P43	P43	P43
Rail top to main top	H	14580	14580	14580	16590	16590
Wheel base	W	8000	8000	8500	9500	9500
Crane width	B	9554	9554	10350	11350	11350
Hook left limitation	S1	5000	5000	6000	7500	7500
Hook right limitation	S2	5000	5000	6000	7500	7500
Left cantilever	L1	6500	6500	7500	9000	9000
Right cantilever	L2	6500	6500	7500	9000	9000





Single Girder Gantry Crane

It is consisted with gantry frame (main girder, legs, bottom end beams), lifting mechanism, travelling mechanism, and electrical control.
It is used with matching CD1 or MD1 electric hoist, and is a light small crane with rail travelling.
Widely used in workshop, storage, port and hydroelectric power station and some other outdoor places, where it has a low frequency or few lifting times.
It is forbidden to be used with melt metal, inflammable, or explosive objects.
It can be designed with one hanging arm or no-hanging arm according to client's demand.

Lifting capacity: 0.5-20 t

Span: 7.5-28.5m

Working class: A3-A5

Ambient temperature: -20~ 60°C

Application: This product is widely used in plants, warehouses, material stocks to lift goods. It is prohibited to use the equipment in the combustible, explosive or corrosive environment.



Single Girder Gantry Crane Parameters (10 tons)

Span	S (m)	12	16	20	24	30
Lifting height	m	9	9	9	9	9
Lifting speed	m/min	7	7	7	7	7
Trolley speed	m/min	20	20	20	20	20
Crane speed	m/min	20	20	20	20	20
Lifting motor	kw	13	13	13	13	13
Trolley motor	kw	0.8	0.8	0.8	0.8	0.8
Total weight	kg	16100	18700	21600	26600	30100
Max Wheel Load	KN	102	110	118	126	149
Track		P38	P38	P43	P43	P43
Rail top to main top	H	11350	11450	11550	11650	12250
Wheel base	W	6500	6500	7500	7500	7500
Crane width	B	7100	7100	8100	8100	8100
Hook left limitation	S1	1300	1300	1300	1300	1300
Hook right limitation	S2	1900	1900	1900	1900	1900
Left cantilever	L1	3000	4000	5000	6000	7500
Right cantilever	L2	3000	4000	5000	6000	7500

Semi Gantry Crane

- It is a middle or small crane, used with CD,MD type hoist or trolley, travelling on rail.
- This product is a regular crane, widely used in mechanical processing workshop for materials handling, outdoor place and warehouse for loading and unloading.
- Under-beam has three-in-one motor, which can make more space for working.
- We could also design the crane according to requirements for you.

Lifting capacity: 2~50t

Span: 10~25m

Working class: A3, A4, A5

Ambient temperature: -20~60°C

Application: This product is a regular crane widely used at open ground and warehouses to load, unload and grab materials. It has 2 controlling methods, namely ground controlling and room controlling.



Semi Gantry Crane Parameters (10 tons)

Span	S (m)	10	12	16	20
Lifting height	m	6	6	6	6
Lifting speed	m/min	7	7	7	7
Trolley speed	m/min	20	20	20	20
Crane speed	m/min	20	20	20	20
Lifting motor	kw	13	13	13	13
Trolley motor	kw	0.8	0.8	0.8	0.8
Total weight	kg	6600	7500	8350	10650
Max Wheel Load	KN	78	85	94	103
Track		P38	P38	P38	P38
Rail top to main top	H	720	865	920	970
Up wheel base	W1	2000	2000	2500	3000
Down wheel base	W2	4800	5200	5200	5200
Hook left limitation	S1	1293	1293	1293	1293
Hook right limitation	S2	1893	1893	1893	1893
Up leg distance	L1	1600	1600	1600	1600
Down leg distance	L2	3700	3700	3700	3700





Jib Crane

It is consisted with gantry frame (main girder, legs, bottom end beams), lifting mechanism, travelling mechanism, and electrical control.
It is used with matching CD1 or MD1 electric hoist, and is a light small crane with rail travelling. Widely used in workshop, storage, port and hydroelectric power station and some other outdoor places, where it has a low frequency or few lifting times.
It is forbidden to be used with melt metal, inflammable, or explosive objects.
It can be designed with one hanging arm or no-hanging arm according to client's demand.

Lifting capacity: 0.5-20 t

Span: 7.5-28.5m

Working class: A3-A4

Ambient temperature: -20~ 60°C

Application: This product is widely used in plants, warehouses, material stocks to lift goods. It is prohibited to use the equipment in the combustible, explosive or corrosive environment.



BZ Type Jib Crane Parameters (5 tons)

Lifting height	h (m)	4	4.5	5
Effective radius	R (m)	4.5	5	5.5
Lifting speed	m/min	8	8	8
Travelling speed	m/min	20	20	20
Rotating speed	°	arbitrarily	arbitrarily	arbitrarily
Rotation angel	r/min	0.7	0.7	0.7
Overall height	H(m)	6.052	6.522	7.022
Overall length	L(m)	5.44	5.94	6.44
Total weight	kg	4020	4224	4430

Electric Hoist

Electric hoist is a kind of special lifting equipment, installed on the crane and gantry crane. It has features of small volume, light weight, simple operation and convenient use, etc, which is used for industrial and mining enterprises, storage terminals and other places.

We can supply hoist with lifting capacity: 0.25~80t, lifting height: 3~50m, work class: A3, A4, A5, speed: single / double speed. We also design and manufacture the nonstandard crane according users' demanding.

Lifting capacity: 0.25~80t

Lifting height: 3~50m

Working class: A3, A4, A5

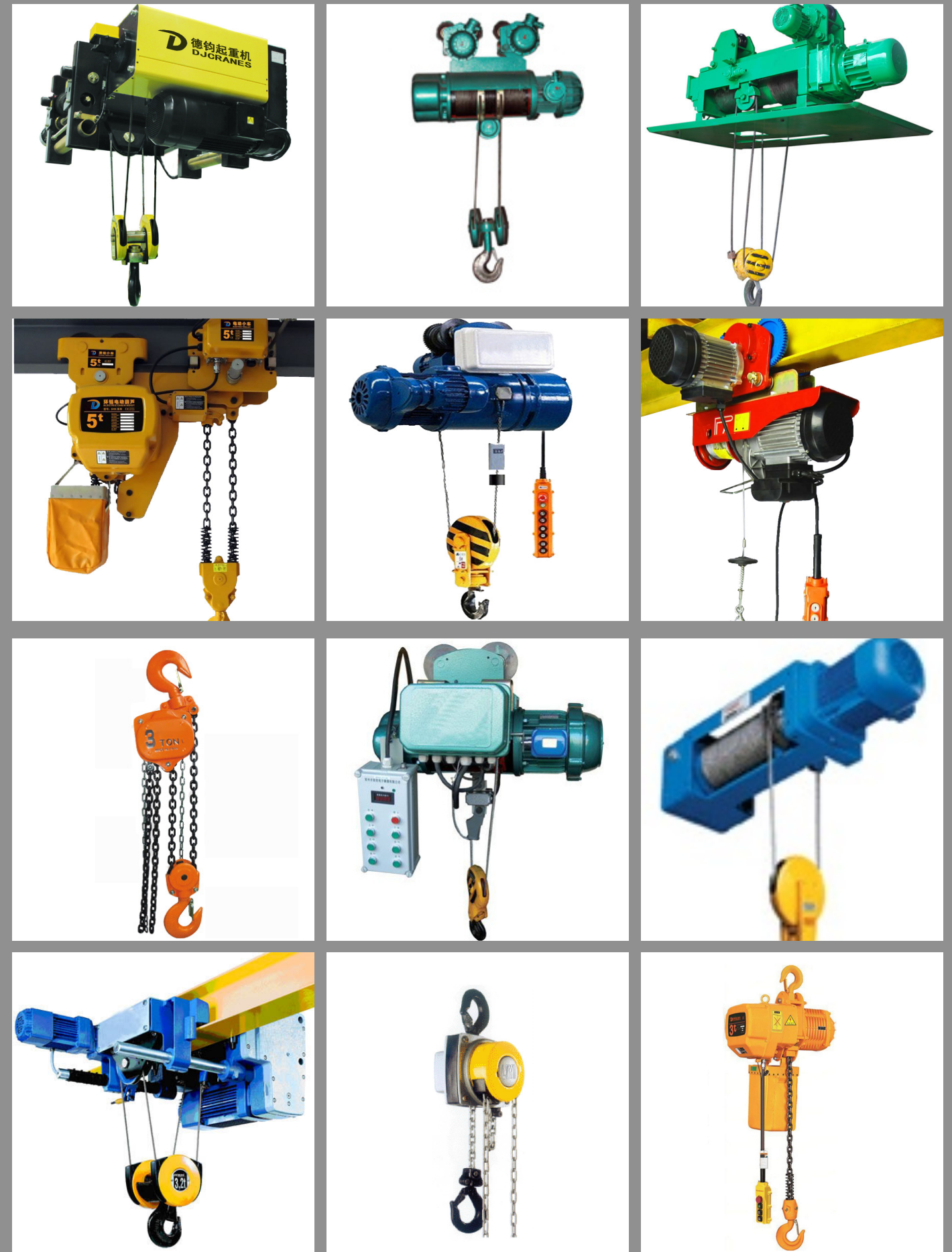
Ambient temperature: -20~60°C

Application: It can be mounted on single beam, bridge, gantry and jib cranes, widely used in factories, mines, harbours, warehouses, cargo storage areas and shops.



Electric Hoist Parameters(10 tons)

Capacity	t	10	10	10	10	10	10
Hoisting speed	m/min	7	7	7	7	7	7
Travel speed	m/min	20、30	20、30	20、30	20、30	20、30	20、30
Lifting motor	Type	ZD1 51-4/13kw	ZD1 51-4/13kw	ZD1 51-4/13kw	ZD1 51-4/13kw	ZD1 51-4/13kw	ZD1 51-4/13kw
Operation motor	Type	ZDY1 21-4/0.8kw×2	ZDY1 21-4/0.8kw×2	ZDY1 21-4/0.8kw×2	ZDY1 21-4/0.8kw×2	ZDY1 21-4/0.8kw×2	ZDY1 21-4/0.8kw×2
Track		32b ~ 50b	32b ~ 50b	32b ~ 50b	32b ~ 50b	32b ~ 50b	32b ~ 50b
Wirope	Dia.(mm)	15	15	15	15	15	15
	Specification		6×37+FC		6×37+FC		6×37+FC
Hoisting height	m	6	9	12	18	24	30
Min curvature radius	m		3.5	4	6	7.5	9
Weight (Operation type)	kg		1048	1098	1209	1301	1411
Weight (Stationary type)	kg		795	841	943	1035	1127





Winch

winch is used to complete traction drive with human power or mechanical power via a reel, which can handle heavy materials or loads vertically or horizontally or obliquely. The electric winch has the features, such as, generality, compact structure with small volume, light dead weight, large lifting capacity and convenient to move, etc.

Winch is divided into manual winch and electric winch. Mainly used in construction, water, forestry, mining, port, etc material lift or drag.

Lifting capacity: 2~200t

Lifting height: 50~1000m

Working class: M3, M4, M5

Ambient temperature: -25~60°C

Application: Mainly used for hoisting pull and unloading tow the weight droop, for example, steel, installation and disassembly of mechanical equipment.



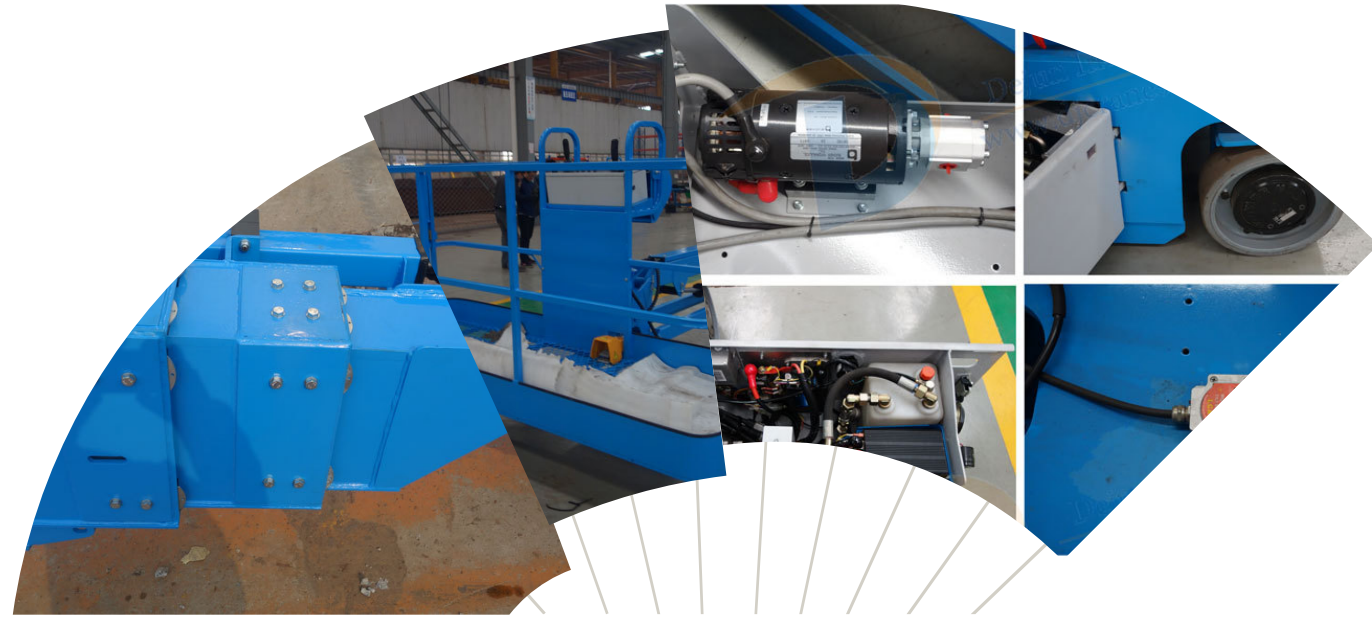
JM Series Winch Parameters

Type	Roated load (KN)	Rated speed (m/min)	Rope capacity (M)	Rope Diameter (mm)	Motor type	Motor power (KW)	Dimensions (mm)	Total weight (kg)
JM1	10	15	100	Φ9.3	Y112M-6	3	620*701*417	270
JM1.6	16	16	150	Φ12.5	Y132M ₂ -6	5.5	945*996*570	500
JM2	20	16	150	Φ13	Y160M-6	7.5	945*996*570	550
JM3.2	32	9.5	150	Φ15.5	YZR160M ₂ -6	7.5	1430*1160*910	1100
JM3.2B	32	12	195	Φ15.5	YZR160M ₂ -6	7.5	1082*1014*610	536
JM5	50	10	270	Φ21.5	YZR160L-6	11	1235*1230*805	1560
JM5B	50	9.5	200	Φ21.5	YZR160L-6	11	1620*1260*945	1800
JM5C	50	9.5	250	Φ21.5	YZR160L-6	11	1235*1230*805	1800
JM5D	50	15	250	Φ21.5	YZR180L-6	15	1235*1230*805	1850
JM5E	50	20	250	Φ21.5	YZR200L-6	22	1235*1230*805	2000
JM6	60	9.5	270	Φ24	YZR180L-6	15	1235*1509*805	1800
JM8	80	8	250	Φ26	YZR180L-6	15	2090*1475*956	2900
JM8B	80	9.5	350	Φ26	YZR180L-6	15	1075*1598*985	2650

Aerial Work Platform

Aerial work platform is a kind of movable aerial work product. It serves various industries for aerial operations, equipment installation, maintenance and other mobile high-altitude operations.

The aerial work platform mainly include scissor lift, telescopic boom lift, articulating boom lift and mast lift.



Spare Parts



Strategic Partners

